

MASTER AGREEMENT NUMBER:			DAS APPROVAL DATE: 7/12/2016															
VENDOR NAME: B-04-002																		
SERVICE NAME: Wireless Service and Equipment: Accessories																		
Item (from pricing section)	Product Code	Description	Devices															
			iPhone 5s	iPhone 6	iPhone 6 Plus	iPhone 6s	iPhone 6s Plus	Samsung S5	Samsung S6	LG G3	Kyocera DuraXT	Samsung S7	Samsung Grand Prime					
VEHICLE POWER CHARGERS (CLA)																		
1	685387370115	Vehicle charger for iOS devices equipped with Lightning connector.	x	x	x													
2	PVX0180V	Dual Output Vehicle Charger - Micro-USB						x	x	x								
20	822445124833	Key Dual Output Car Charger – MicroUSB- Fast, convenient and reliable charging for smartphone.										x						
CASE WITH SWIVEL OR HOLSTERS																		
3	660543352679	This Black OtterBox Rugged Defender Series Case for your device provides three layers of protection in a sleek, slim design.		x														
4	660543353614	This Black OtterBox Rugged Defender Series Case provides three layers of protection in a sleek, slim design.			x													
5	660543026860	The OtterBox Rugged Defender Series Case for iPhone 5/5s provides three layers of protection in a sleek, slim design.	x															
6	660543032229	The OtterBox Rugged Defender Series Case for device provides three layers of protection in a sleek, slim design.					x											
7	CFL7717Q	The OtterBox Rugged Defender Series Case for your device provides three layers of protection in a sleek, slim design.								x								
8	660543352785	This OtterBox Commuter Series Case for your Apple device is a sturdy case that allows full access to your device's functions, without adding a lot of bulk.				x												
9	660543353683	This OtterBox Commuter Series Case is a sturdy case that allows full access to your device's functions, without adding a lot of bulk.				x												
10	CHY0087V	This durable, form-fitted holster allows you to carry your handset securely. It faces inward to protect the face of the handset while allowing access to the headset jack and charging port.									x							
15	CCU9219Q	Universally sized to fit most small to medium mobile and smartphone devices on the market, this rugged mobile device holster features durable nylon material, a hook/loop lid closure, and a 360 degree rugged rotating flex-clip.									x							
16	660543393054	Otterbox Defender Series Case (Black)-The OtterBox Rugged Defender Series Case for your device, provides three layers of protection in a sleek, slim design.										x						
17	94664032316	Nite Ize Clip Case Cargo Holster - Wide Load. Made of extremely durable ballistic polypropylene, this is one tough phone case. With or without a form fit case, it absorbs shocks and shields from the elements. Its patented flex-clip attaches securely over and under your belt, fully rotates for access at any angle, and even locks in eight different positions.											x					
18	660543026860	Otterbox Rugged Defender Series Case-The OtterBox Rugged Defender Series Case for iPhone 5/5s provides three layers of protection in a sleek, slim design.	x															
19	660543352785	Otterbox Commuter Series Case-This OtterBox Commuter Series Case for your Apple device is a sturdy case that allows full access to your device's functions, without adding a lot of bulk.				x												
HEADSET AND EARBUD																		
11	HHX3830	Go hands-free with this push-to-talk headset. Small, lightweight earpiece, equipped with an in-line noise cancellation microphone, blends maximum comfort and value	x	x	x	x	x	x	x	x								
12	HBX1900Q	This Samsung Bluetooth headset offers a rich set of features in a sleek, modern aesthetic look.	x	x	x	x	x	x	x	x	x							
13	887276040189	The stylish MG900 raises the bar for clarity and comfort. Built-in noise canceling technology ensures crystal clear call audio without the interference of annoying wind noise and ambient sound.	x	x	x	x	x	x	x	x	x							
14	KPX3260Q	Drive smarter with a complete hands free solution that goes beyond enabling crystal clear communication to offer advanced features to meet all your in vehicle needs.	x	x	x	x	x	x	x	x	x							
DATA CONNECTIVITY CABLE																		

[illegible]

VENDOR NAME: **Sprint Nextel**

SERVICE NAME: **Wireless Service and Equipment: Accessories**

Activity (Add, Delete, Change)	Date of Vendor Request	Date Approved By DAS	Item	Item Code	Description of Accessories	Unit	Cost	Net Cost
Add	05/06/15	06/17/15	1	685387370115	Vehicle charger for iOS devices equipped with Lightning connector.	ea	\$24.99	\$21.24
Add	05/06/15	06/17/15	2	PVX0180V	Dual Output Vehicle Charger - Micro-USB	ea	\$29.99	\$25.49
Add	05/06/15	06/17/15	3	660543352679	Black OtterBox Rugged Defender Series Case for iPhone 6 provides three layers of protection in a sleek, slim design.	ea	\$49.99	\$42.49
Add	05/06/15	06/17/15	4	660543353614	Black OtterBox Rugged Defender Series Case for iPhone 6Plus provides three layers of protection in a sleek, slim design.	ea	\$59.99	\$50.99
Add	05/06/15	06/17/15	5	660543026860	OtterBox Rugged Defender Series Case for iPhone 5/5s provides three layers of protection in a sleek, slim design.	ea	\$49.99	\$42.49
Change	08/12/15	08/21/15	6	660543032229	The OtterBox Rugged Defender Series Case for device provides three layers of protection in a sleek, slim design.	ea	\$49.99	\$42.49
Add	05/06/15	06/17/15	7	CFL7717Q	OtterBox Rugged Defender Series Case for LG G3 provides three layers of protection in a sleek, slim design.	ea	\$49.99	\$42.49
Add	09/30/15	10/02/15	8	660543352785	This OtterBox Commuter Series Case for your Apple device is a sturdy case that allows full access to your device's functions, without adding a lot of bulk.	ea	\$34.99	\$29.74
Add	09/30/15	10/02/15	9	660543353683	This OtterBox Commuter Series Case is a sturdy case that allows full access to your device's functions, without adding a lot of bulk.	ea	\$44.99	\$38.24
Add	09/30/15	10/02/15	10	CHY0087V	This durable, form-fitted holster allows you to carry your handset securely. It faces inward to protect the face of the handset while allowing access to the headset jack and charging port.	ea	\$19.99	\$16.99
Add	09/30/15	10/02/15	11	HHX3830	Go hands-free with this push-to-talk headset. Small, lightweight earpiece, equipped with an in-line noise cancellation microphone, blends maximum comfort and value.	ea	\$14.99	\$12.74
Add	09/30/15	10/02/15	12	HBX1900Q	This Samsung Bluetooth headset offers a rich set of features in a sleek, modern aesthetic look.	ea	\$39.99	\$33.99
Add	09/30/15	10/02/15	13	887276040189	The stylish MG900 raises the bar for clarity and comfort. Built-in noise canceling technology ensures crystal clear call audio without the interference of annoying wind noise and ambient sound.	ea	\$39.99	\$33.99
Add	09/30/15	10/02/15	14	KPX3260Q	Drive smarter with a complete hands free solution that goes beyond enabling crystal clear communication to offer advanced features to meet all your in vehicle needs.	ea	\$99.99	\$84.99
Add	09/30/15	10/02/15	15	CCU9219Q	Universally sized to fit most small to medium mobile and smartphone devices on the market, this rugged mobile device holster features durable nylon material, a hook/loop lid closure, and a 360 degree rugged rotating flex-clip.	ea	\$29.99	\$25.49
Add	06/21/16	07/12/16	16	660543393054	Otterbox Defender Series Case (Black)-The OtterBox Rugged Defender Series Case for your device, provides three layers of protection in a sleek, slim design.	ea	\$49.99	\$42.49

VENDOR NAME: Sprint Nextel								
SERVICE NAME: Wireless Service and Equipment: Accessories								
Activity (Add, Delete, Change)	Date of Vendor Request	Date Approved By DAS	Item	Item Code	Description of Accessories	Unit	Cost	Net Cost
Add	06/21/16	07/12/16	17	94664032316	Nite Ize Clip Case Cargo Holster - Wide Load. Made of extremely durable ballistic polypropylene, this is one tough phone case. With or without a form fit case, it absorbs shocks and shields from the elements. Its patented flex-clip attaches securely over and under your belt, fully rotates for access at any angle, and even locks in eight different positions.	ea	\$34.99	\$29.74
Add	06/21/16	07/12/16	18	660543026860	Otterbox Rugged Defender Series Case-The OtterBox Rugged Defender Series Case for iPhone 5/5s provides three layers of protection in a sleek, slim design.	ea	\$49.99	\$42.49
Add	06/21/16	07/12/16	19	660543352785	Otterbox Commuter Series Case-This OtterBox Commuter Series Case for your Apple device is a sturdy case that allows full access to your device's functions, without adding a lot of bulk.	ea	\$34.99	\$29.74
Add	06/21/16	07/12/16	20	822445124833	Key Dual Output Car Charger – MicroUSB- Fast, convenient and reliable charging for smartphone.	ea	\$29.99	\$25.49
NOTE: Grey highlighted items are no longer available. They have been either deleted, changed or no longer applies								

VENDOR NAME: Nextel Sprint Communications**SERVICE/PRODUCT NAME: Wireless Service and Equipment: Service****SERVICE/PRODUCT DESCRIPTION:**

Sprint's integrated data and voice network provides customers with one single, dynamic integrated digital nationwide footprint; 100% digital CDMA cellular voice communications; digital "always on", IP-based packet data service; and no roaming charges within the U.S. on most plans. Sprint's 4-in-1 wireless communication solution provides digital cellular, Specialized Messaging Services, and wireless circuit and packet data.

Sprint Direct Connect® is the 2-way digital walkie-talkie feature that lets you get right through *instantly* without the hassles of voice mail, phone tag or time delays. Sprint Direct Connect® is available on certain phones and lets you instantly contact other Sprint Direct Connect® users. It provides instant communication via a private or group "Walkie-talkie"-like call. Sprint Direct Connect improves productivity and reduces "telephone tag".

Group Connect™ (now called Talkgroup) allows customers to instantly communicate with up to 25 people at once with the push of a button, using Sprint Direct Connect service. It is a great feature for team members who depend on timely, consistent communication. Instead of making multiple calls, customers can reach more people at once -- get answers and get back to work.

Sprint's Connection Cards allow customers to wirelessly access their email, corporate network, and the Internet at high speeds on Sprint's Networks

Sprint Flat Rate Business Plan**Overview**

The National Flat Rate Plan consists of a monthly recurring charge and a flat per minute rate. The per minute rate is applicable to all Voice Minutes Used, including Anytime Minutes, Nights & Weekends, Nationwide Long Distance, Sprint Mobile-to-Mobile Calling and Sprint Direct Connect. There are no included plan minutes. Shared minutes are not available and all plans include voice mail and caller ID. Additional Sprint Direct Connect® features, including, but not limited to, Talkgroup, Group Connect and International Direct Connect, are available with certain devices and are subject to an additional charge. Customers may not combine certain voice plan add-ons, including Sprint Mobile-to-Mobile, Shared Minutes, and Unlimited Nights & Weekends (nights starting at 9pm), with this plan.

Sprint Business Essentials**Overview**

Sprint Business Essentials® Plan is our core wireless voice offering that provides buckets of minutes that can be shared across users on an account with the added benefit of Unlimited Sprint Mobile to Mobile Calling (CDMA) or Unlimited Nationwide Walkie-Talkie. Cellular minutes share across all Sprint Business Essentials® plan tiers within an account. With the Sprint Mobile to Mobile Calling option, your customers receive unlimited minutes for calls between Sprint Phones. This is a valuable option for employees who often call other Sprint Phones, as Anytime Minutes are saved for other call types.

Along with a group of Anytime Minutes, subscribers also receive extended calling time with:

- Unlimited Nights & Weekends
- Unlimited Nationwide Walkie-Talkie or Mobile to Mobile (CDMA) Minutes
- Nationwide Long Distance
- Voicemail and Caller ID
- Shared Cellular Minutes

Ability to "Add-A-Phone". The Add-A-Phone has no minutes allowance of its own but will share the minutes of the other lines on the account.

Program Details

- Included Minutes & Sharing
- Anytime cellular minutes share across all rate tiers on the same network.

- Additional Add-a-Phone lines are available for low cost.
- Customers CANNOT purchase the Add-a-Phone as a stand-alone plan. A customer must have at least one Sprint Business Essentials® core plan. There is no limit to the number of add-on plans that may be added to an account.
- Unlimited Nights & Weekends are included.
- Night and Weekend Minutes can be used from Monday through Thursday 9pm to 7am and Friday 9 pm to Monday 7am.
- Unlimited Mobile to Mobile Minutes
- Long Distance is included.
- Caller ID and Voicemail are included.
- Roaming is included on CDMA Network. Roaming not available with single-band phones or for customer located outside the Nationwide Sprint Network.
- Roaming usage may not exceed 50% of total usage per month or allocated roaming minutes in applicable markets. Roaming minutes cannot be shared.
- International roaming rates will vary and may be billed separately.

Sprint Business Essentials® Plans:

400 Anytime Minutes

1000 Anytime Minutes

1400 Anytime Minutes

2000 Anytime Minutes

2800 Anytime Minutes

4500 Anytime Minutes

Add a Phone (0 Anytime Minutes)

Definitions:

Add A Phone: Great for small businesses, Sprint Add-a-Phone lets you share plan minutes on one account.

Anytime Minutes: Anytime Minutes are included in all Sprint Service Plans. On most plans, Anytime Minutes are used from 7 a.m. to 9 p.m., Monday through Friday. If your plan does not include Night & Weekend Minutes, then your Anytime Minutes are also used from 9 p.m. Friday through 7 a.m. Monday. Anytime Minutes are also shared between all phones on a Sprint Add-a-Phone® account.

Unlimited N&W Minutes (Starting at 9 PM): **Night & Weekend Minutes are included in most Sprint Service Plans.** On most plans, Night & Weekend Minutes are used from **9 p.m. to 7 a.m.**, Monday through Friday and all day on Saturday and Sunday. If your Sprint Service Plan does not include Night & Weekend Minutes, then minutes used during this time would count towards your Anytime Minutes. Night & Weekend Minutes are also shared between all phones on a Sprint Add-a-Phone account.

Unlimited Mobile to Mobile Minutes: With unlimited Mobile to Mobile Calling, you can make or receive unlimited nationwide calls between every Sprint Phone (while on the Sprint Nationwide Networks. Unlimited Mobile to Mobile Calling minutes do not take away from your anytime minutes. As long as you call another Sprint Phone, you will not be charged minutes if unlimited Mobile to Mobile Calling is part of your service plan.

Sprint CDMA EV-DO and EVDO Rev-A Connection Card Plan

Sprint's Connection Cards allow customers to wirelessly access their email, corporate Network and the Internet at high speeds.

Text Messaging

Send and receive SMS text messages and/or SMS Voice messages instantly across the room or across the country. Now also send and receive messages to/from over 70 countries from the US with International Text Messaging.

Pay-As-You-Go Messaging

- Pay-as-you-go basic messaging service, send and receive text, picture and audio messages from your Sprint phone, any email address or through Sprint.com. Cost per message.

Text Messaging 300 Plan

- 300 Text Messages and pay-as-you-go image/audio messages.
- Alerts are charged per received message. One way messaging alerts are one way messages that can only be received by the customer, and do not require a text messaging service subscription.

Text Messaging 1000 Plan

- 1000 Text Messages and pay-as-you-go image/audio messages.
- Alerts are charged per received message. One way messaging alerts are one way messages that can only be received by the customer, and do not require a text messaging service subscription.

Unlimited Text Messaging Plan

- Unlimited text messaging and pay-as-you-go audio/image messaging.
- Alerts are charged per received message. One way messaging alerts are one way messages that can only be received by the customer, and do not require a text messaging service subscription.

BLACKBERRY PLAN:

Plan includes the following:

- Zero Cellular Minutes. All Cellular use at an additional fee per minute.
- Zero Sprint Direct Connect. All Sprint Direct Connect Minutes at an additional fee per minute.
- Unlimited BlackBerry email and Web

Unlimited Mobile to Mobile can be added for additional cost. This will enable unlimited cellular calls between Sprint phones.

WORLDWIDE BLACKBERRY EMAIL AND WEB PLAN: (Voice Plan Require)

Plan includes the following:

- Zero Cellular Minutes. All Cellular use at an additional fee per minute.
- Zero Sprint Direct Connect. All Sprint Direct Connect Minutes at an additional fee per minute.
- Unlimited GSM/GPRS email and web access in all GPRS countries
- Voice, Long Distance, Off Network Roaming, Off-Network Long Distance, billed at an additional cost.
- Includes Unlimited MB Web access, wireless e-mail.

Not combinable with Data Packs. Phone as Modem not included.

WIRELESS PRIORITY SERVICE (WPS) allows authorized National Security and Emergency Preparedness (NS/EP) personnel to make cellular calls during an emergency when channels may be congested. WPS is the interconnect complement to Sprint's own Priority Connect service.

WPS is overseen by the National Communications System a division of the Department of Homeland Security. WPS was developed to meet a directive from the White House. NCS executes the program on behalf of the Executive Office of the President. Only individuals in NS/EP positions are authorized to use of WPS. Five categories have been established in order to identify critical NS/EP leadership functions and determine eligibility. Users must apply for and be approved by the National Communication System for Wireless Priority Service. Customers must apply directly to the NCS for Wireless Priority Service and be approved in order for Sprint to be able to add this service to a number. WPS is for leadership positions only and is not intended for use by all emergency service personnel. Priority Levels are:

- A. Executive Leadership and Policy Makers
- B. Disaster Response/Military Command and Control
- C. Public Health, Safety and Law Enforcement Command
- D. Public Services/Utilities and Public Welfare
- E. Disaster Recovery

Customer must be a Sprint subscriber. Customer must request WPS service at <http://wps.ncs.gov> or call 1.866.NCS.CALL to apply. NCS will inform Sprint of those subscribers that are approved for WPS and at

what Priority Level. Sprint cannot add, delete or modify a WPS subscription without NCS consent. Customers may access additional information at <http://wps.ncs.gov/>.

WPS is invoked by dialing *272 prior to the destination number. Wireless Priority Service has a one-time activation fee, a monthly charge, a per minute charge, and additional long distance charges if the customer's rate plan does not include long distance. Use of Wireless Priority Service does not draw down upon cellular minutes in a voice rate plan. Wireless Priority Service does not work outside of the United States.

Sprint 411 – provides phone numbers, addresses, and directions.

Standard Static IP Address (CDMA) - Allows Customer to purchase a Static IP address to attach to their device.

Sprint AIRAVE™

Sprint AIRAVE™ provides enhanced wireless service, even if there is no coverage, for to 5,000 square feet. Sprint AIRAVE™ works with any Sprint phone — up to three users at the same time. Installs with existing broadband Internet access, such as DSL, cable or T1. Automatically transfers calls to the Sprint Nationwide Network once outside the 5,000 square foot area provided there is sufficient signal from the Sprint Network beyond the range of the AIRAVE Base Station. Limit access to the AIRAVE by creating a list of up to 50 approved Sprint phone numbers.

What Is Needed:

Active Sprint phone(s), Sprint voice plan, Broadband Internet access, such as DSL, cable or T1. Available Ethernet port — either on your modem or via a router — to connect AIRAVE to your broadband data service. Available power outlet.

BLACKBERRY TECHNICAL SUPPORT SERVICES

SMB ADVANTAGE SUPPORT

Included Service Features:

Coverage and Access:

- 24 x 7 Telephone with an average 90 seconds response.
- Blackberry Expert Support Center (BESC) (2-Hour Response on Electronic Incidents)

Problem Management

Blackberry Software Service Packs and Hotfixes

Blackberry BES Software Upgrades

Blackberry Infrastructure Status and Notifications

- View Status and Event details in BESC
- Web Based

Blackberry Training 3, 4, and Blackberry Certification

- Blackberry Certification Vouchers

Blackberry Technical Webcast Series

Blackberry Solve Newsletter

Named Callers

- 5

PDV CONNECT (FORMERLY SPRINT NEXTMAIL)

PDV Connect (formerly Sprint NextMail) is a unique mobile communications service enabling instant communication with any subscriber on the Nationwide Sprint Network. With PDV Connect, Sprint's customers can instantly send a voice message to up to 50 recipients via a text or voicemail to an e-mail destination and/or mobile phone. With a push of the button (via Direct Connect or "Send" voice call (Sprint handsets), a PDV Connect message can be easily sent. PDV Connect is a quick and simple way to Record, Document and Share information from the field with those in an office.

Additionally, PDV Connect Pro (formerly Sprint NextMail Professional) enhances the standard PDV Connect service by offering Sprint's customers' mobile employees the ability to send instantly their location information and pictures along with their PDV Connect messages. It is an easy way for mobile users to show where they were at any point in time, without being tracked. Location and pictures can be viewed online or on the terminating e-mail address. This information is not available when sending the message to a mobile handset via a text message.

Features of PDV Connect include:

- Push or Send to Locate
- Push or Send to Photo

- Push or Send to Mobile Time Card
- Push or Send to Status Map
- Push or Send to Document
- Push or Send to Voice Reply Text Message
- Push or Send to Mobile to Individual or Group Voice Messaging with 'Listen to Verification'
- Push or Send to Voice Interoperability

PDV Connect offers many valuable benefits that improve efficiency and effectiveness of communication, resulting in increased collaboration and productivity in the workplace. Below are some of the ways our subscribers can benefit by using PDV Connect:

- Intelligent Queuing
- Reduces Hold Times
- Improves Safety
- Reduces Paperwork
- Improves Efficiency
- Increases Productivity
- Easy Collaboration
- Improves Customer Satisfaction
- Dispute Resolution

In-Store/Assigned Care Repair/Replacements

Customers will be charged a flat fee regardless of warranty period for in-store services. In-store services are defined as eligible repairs required to devices. In-store services are not available on all device models. Customers will be charged a flat fee regardless of warranty period for assigned care representatives services

TECHNOLOGY EVOLUTION

In the normal course of technology evolution and enhancement, Sprint continually updates and upgrades its Networks, Products and Services. In some instances, these efforts will result in the need to ultimately replace certain offerings or technologies. In such event, Sprint will undertake such replacement efforts in a customer-focused and commercially reasonable manner and will, throughout the process, provide its customers with periodic updates that provide relevant information.

As part of such technology evolution, Sprint may choose to migrate the State from Products activated on the Nextel National Network to either a Sprint® Direct Connect® push-to-talk ("PTT") Product, or a State selected non-PTT Product, that runs on the Nationwide Sprint Network; provided that Sprint will not undertake any such migration with less than 12 months prior notice. , The State will have the ability to upgrade its existing devices to new or replacement devices under the then effective and applicable Sprint handset upgrade program as set out in the current product schedule. If the State has any devices that are not eligible for upgrade under this handset upgrade program, the parties will mutually agree on an alternative process for replacement of devices with devices that are compatible with the replacement technologies. If the State is migrated to a new technology under this provision, upon completion of such migration the provisions related solely to the Nextel products and services will be removed from the product schedule.

Premium Data add-on

This add-on is required for all Smartphones except Blackberries. Smartphones require activation on a service plan with a data bundle or data attachable.

SPRINT TABLET DATA PLANS

Sprint offers full featured tablet data plans for the iPad and iPad mini's. Plans offered support both 3G and 4G and will support LTE and WIMAX services. There are 4 usage plans offered for agencies to best customize to their individual needs. These plans are only available on sprint tablets.

3G/4G CONNECTION CARD PLAN (see reference to Acceptable Use Policy below)

The 3G/4G Connection Plan provides both EVDO (using CDMA technology) and Sprint 4G data functionality in certain coverage areas of the United States. Sprint 4G Network coverage is not available everywhere and requires a Sprint 4G Network data-compatible connection card. Customer may contact its Sprint Account Representative for current coverage areas and applicable wireless devices. Sprint reserves the right to limit the devices that can be used with this Business Plan. This Business is only available to Customer Lines domiciled in the United States.

The 3G/4G Connection Card Plan includes unlimited data usage on the Sprint 4G Network, the Sprint 3G Network and the Nationwide Sprint Network. Wireless high speed data coverage is not available everywhere and requires a wireless high speed data-compatible device. Where the wireless high speed data network is available and a wireless high speed data-compatible device is used, Customer Lines will first attempt to connect to the Sprint 4G Network, then the Sprint 3G Network, and then will default to the Nationwide Sprint Network depending on coverage and network availability. Roaming is not available on the Sprint 4G Network at this time. Premium Services content is not available with this Business Plan. Premium Services is defined as downloads and applications, such as ringtones and screen savers, available through wireless data Services and beyond basic data usage.

3G/4G EMBEDDED CONNECTION PLANS

The 3G/4G Embedded Connection Plan provides both EVDO (using CDMA technology) and Sprint 4G functionality in certain coverage areas of the United States. Sprint 4G Network coverage is not available everywhere and for access to the Sprint 4G Network this Business Plan requires a Sprint-sold Sprint 4G Network-compatible embedded connection data device. Sprint 3G Network coverage is not available everywhere and for access to the Sprint 3G Network, this Business Plan requires an EVDO-compatible embedded connection data device. Customer may contact its Sprint Account Representative for current coverage area and eligible wireless devices. Sprint reserves the right to limit the devices that can be used with this Business Plan. This Business Plan is only available to Customer Lines domiciled in the United States.

The Embedded Connection Plan includes unlimited data usage on the Sprint 4G Network (on select, capable devices) and up to 5GB/month aggregate data usage on the Sprint 3G Network and Nationwide Sprint Network. All pricing is the same whether Customer Lines use the Sprint 4G Network, the Sprint 3G Network, or the Nationwide Sprint Network. When the Sprint 3G Network is available and Customer uses a Sprint EVDO-compatible embedded connection data device with this Business Plan, Customer Lines will first attempt to connect to the Sprint 3G Network, and then default to the Nationwide Sprint Network depending on coverage and network availability. When the Sprint 4G Network is available and Customer uses a Sprint-sold Sprint 4G Network-compatible embedded connection data device with this Business Plan, Customer Lines will first attempt to connect to the Sprint 4G Network, and then default to the Sprint 3G Network or Nationwide Sprint Network depending on coverage and network availability.

SPRINT CONNECTICUT CHOICE ECONOMY PLAN

The Sprint Connecticut Choice Economy Plan will offer Customer Lines the following features:

- 400 Anytime Minutes with a nominal Anytime Minute Overage Charge
- Unlimited Sprint Mobile-to-Mobile
- Unlimited Nights and Weekends beginning at 7PM
- Unlimited Direct Connect® and Group Connect®
- Nationwide Long Distance Included
- Caller ID and Voicemail Included
- Unlimited Internet Browsing and E-mail Included
- Unlimited Messaging
- Premium Data Add-On Included
- Data Roaming
- Shared Minutes not available

Customer Lines activated on the Sprint Connecticut Choice Economy Plan may upgrade their device after 20 months of continuous service. Wireless high speed data coverage is not available everywhere and requires a wireless high speed data-compatible phone. Where the wireless high speed data network is available and a wireless high speed data-compatible phone is used, Customer Lines will first attempt to connect to the Sprint 4G Network, then the Sprint 3G Network, and then will default to the Nationwide Sprint Network depending on coverage and network availability. Direct Connect and Group Connect are available on select devices.

Customer Lines must primarily be used for Domestic purposes within the coverage area of the Nationwide Sprint Network. As used herein, "Domestic" means use in the 50 United States and U.S. Territories (except Guam). Business Plans that include Roaming ("Roaming Included Plans") are not available with single-band phones or to users who reside or whose primary use is outside an area covered by the Nationwide Sprint Network. Sprint may limit or terminate Service if a Customer Lines move outside of the area covered by the Nationwide Sprint Network. Sprint may, with notice to the Customer, deny, terminate, modify, disconnect or suspend Service to a Customer if Roaming in a given month exceeds: (1) a majority of minutes, or (2) data: 100 megabytes for a Business Plan/month in total. Sprint will notify the Customer of any alleged infraction by

users of the Services prior to an adverse action being taken against a user. If a user needs to utilize more than the permitted 300 MB/month of data in a roaming area, the user may contact Sprint prior to the usage activity. International calling, including in Canada, Mexico, and Guam, is not included in Roaming Included Plans. Wireless data Services and certain calling features (voicemail, caller ID, call waiting, etc.) may not be available while Roaming. Roaming areas may change and Roaming may not be available everywhere. Roaming may not be available on the Sprint 4G Network.

SPRINT CONNECTICUT CHOICE VALUE PLAN

The Sprint Connecticut Choice Value Plan will offer Customer Lines the following features:

- 400 Anytime Minutes with a nominal Anytime Minute Overage Charge
- Unlimited Sprint Mobile-to-Mobile
- Unlimited Nights and Weekends beginning at 7PM
- Unlimited Direct Connect® and Group Connect®
- Nationwide Long Distance Included
- Caller ID and Voicemail Included
- Unlimited Internet Browsing and E-mail Included
- Unlimited Messaging
- Premium Data Add-On Included
- Data Roaming is an additional per KB charge
- Shared Minutes not available

Customer Lines activated on the Sprint Connecticut Choice Value Plan may upgrade their device after 20 months of continuous service. Wireless high speed data coverage is not available everywhere and requires a wireless high speed data-compatible phone. Where the wireless high speed data network is available and a wireless high speed data-compatible phone is used, Customer Lines will first attempt to connect to the Sprint 4G Network, then the Sprint 3G Network, and then will default to the Nationwide Sprint Network depending on coverage and network availability. Direct Connect and Group Connect are available on select devices.

SPRINT® BUSINESS FUSION PLANS FOR SMARTPHONES

Customer Lines can choose any of the below Sprint® Business Fusion Plans to meet their Smartphone needs:

- Sprint® Business Fusion Smartphone Unlimited Talk and Text Plan – Includes Unlimited Domestic Voice, Text, Direct Connect®, and Group Connect.
- Sprint® Business Fusion Smartphone Unlimited Data Plan
- Sprint® Business Fusion Smartphone 3GB Data Plan
- Sprint® Business Fusion Smartphone 2GB Data Plan
- Sprint® Business Fusion Smartphone 1GB Data Plan

Customer Lines subscribed to the Sprint® Business Fusion Smartphone Unlimited Talk and Text Plan voice Roaming is limited to 800 minutes or a majority of minutes per month. Direct Connect® and Group Connect are available only on select devices.

Customer Lines must purchase the Sprint® Business Fusion Smartphone Unlimited Talk and Text Plan and one of the Sprint® Business Fusion Smartphone Data Plans for any Smartphone activated on the Sprint® Business Fusion Plan for Smartphones.

The data allowance for the Smartphone Data Plans includes any Sprint Mobile Hotspot usage for Sprint Mobile Hotspot capable devices. Sprint Mobile Hotspot usage on the Unlimited Data Plan is limited to 3GBs of usage and does not pool. If Customer Line Sprint Mobile Hotspot usage exceeds 3GBs, a nominal per MB overage charge will apply.

SPRINT® BUSINESS FUSION FOR FEATURE PHONE PLANS

Customer Lines can choose any of the below Sprint® Business Fusion Plans to meet their Smartphone needs:

- Sprint® Business Fusion Feature Phone Unlimited Talk and Text Plan – Includes Unlimited Domestic Voice, Text, Direct Connect®, and Group Connect.
- Sprint® Business Fusion Feature Phone Unlimited Data Plan

Customer Lines subscribed to the Sprint® Business Fusion Smartphone Unlimited Talk and Text Plan voice Roaming is limited to 800 minutes or a majority of minutes per month. Direct Connect® and Group Connect are available only on select devices.

Customer Lines may add unlimited data to the Unlimited Talk and Text Plan for the Sprint® Business Fusion Feature Phone. Data Roaming is limited to 100MBs or a majority of KBs for the Unlimited Data Plan. If Customer Line does not choose the Unlimited Data Plan, Sprint will block data for feature phones activated on a Sprint® Business Fusion Feature Phone Plan.

SPRINT® BUSINESS FUSION FOR SMARTPHONE & FEATURE PHONE PLANS DISCOUNTS

If a Customer Line has at least 25 active units on either of the Sprint® Business Fusion Plans, that Customer Line will receive a discount off the Sprint® Business Fusion Smartphone Data Plan and Feature Phone Data Plan. To receive the discount, the 25+ active units on the Sprint® Business Fusion Plans must be under the same billing account number, and the discount will be applied to the Sprint® Business Fusion Data Plan for those active Customer Lines under that same billing account number.

TABLET PLAN (NON-POOLING)

Customer Lines subscribed to the non-pooling tablet plan will receive 3GB Data Services. Data service and data roaming limitations will apply to Customer Lines subscribed to the non-pooling tablet plan.

SPRINT CUSTOM DOMESTIC 3G/4G LTE UNLIMITED FOR ACCEPTABLE USE TABLET PLAN (see reference to Acceptable Use Policy below)

The Custom Domestic 3G/4G LTE Unlimited for Acceptable Use Tablet Plan provides both EVDO (using CDMA technology) and Sprint 4G data functionality in certain coverage areas of the United States. Data roaming limitations will apply to Customer Lines subscribed to the Custom Domestic 3G/4G LTE Unlimited for Acceptable Use Tablet Plan. Sprint 4G Network coverage is not available everywhere and requires a Sprint 4G Network data-compatible tablet. Customer may contact its Sprint Account Representative for current coverage areas and applicable wireless devices. Sprint reserves the right to limit the devices that can be used with this Business Plan. This Business Plan is only available to Customer Lines domiciled in the United States.

The Custom Domestic 3G/4G LTE Tablet Plan includes unlimited data usage on the Sprint 4G Network, the Sprint 3G Network and the Nationwide Sprint Network. All pricing and available MBs are the same whether Customer Lines use the Sprint 4G Network, the Sprint 3G Network or the Nationwide Sprint Network. Wireless high speed data coverage is not available everywhere and requires a wireless high speed data-compatible device. Where the wireless high speed data network is available and a wireless high speed data-compatible device is used, Customer Lines will first attempt to connect to the Sprint 4G Network, then the Sprint 3G Network, and then will default to the Nationwide Sprint Network depending on coverage and network availability. Roaming is not available on the Sprint 4G Network at this time. Premium Services content is not available with this Business Plan.

SPRINT FLAT RATE PLAN FOR STATE OF CONNECTICUT

The Sprint Flat Rate Plan charges Customer Lines a monthly recurring charge and a flat rate per-minute charge for each minute used since no Anytime Minutes are included. The flat rate per-minute charge applies to all voice minutes used including Anytime Minutes, Nationwide Long Distance, Domestic Roaming, and Domestic Roaming Long Distance. Customer Lines subscribed to the Sprint Flat Rate Plan will also receive Direct Connect® and Group Connect, Unlimited messaging, Caller ID & Voice Mail, Unlimited email and web data, Premium Data, Unlimited Mobile to Mobile and Unlimited Nights and Weekends beginning at 9PM. Data roaming limitation and data roaming overage charges apply.

If Customer Line's data roaming usage in a given month exceeds the Data Roaming limitation, Customer Line will be liable for the overage charges. Customer Line may be liable for both overage charges if Customer Line's usage in a given month exceeds the Data Services limitation (see reference to Acceptable Use Policy) and the Data Roaming limitation.

SPRINT DATA ACCESS PLANS FOR BUSINESS FOR THIRD PARTY MACHINE-TO-MACHINE (M2M) DEVICES

Sprint Data Access Plans for Business for Third Party M2M Devices provide data transmission services via the Sprint 4G Network, the Sprint 3G Network, and/or the Nationwide Sprint Network depending on the M2M Device used and the Business Plan purchased. Customer Lines have the option of selecting any of the following Sprint Data Access Plans for Business for Third Party M2M Devices:

- 1MB
- 5MB
- 25MB
- 100MB
- 1GB
- 3GB
- 6GB
- 12GB
- 30GB

Data pooling is included with all of the above listed Sprint Data Access Plans for Business for Third Party M2M.

Sprint Data Access Plans for Business for Third Party M2M Devices provide access to the Sprint 4G Network, the Sprint 3G Network and the Nationwide Sprint Network. Wireless high speed data coverage is not available everywhere and requires a wireless high speed data-compatible M2M Device. When the Sprint 4G Network is available and Customer uses a Sprint 4G-compatible device with a Sprint Data Access Plan for Business for Third Party M2M Devices, the M2M Device first will attempt to connect to the Sprint 4G Network, and then will default to the Sprint 3G Network or Nationwide Sprint Network, depending on coverage and network availability. When the Sprint 3G Network is available and Customer uses a Sprint EVDO-compatible device with a Sprint Data Access Plan for Business for Third Party M2M Devices, the M2M Device first will attempt to connect to the Sprint 3G Network, and then will default to the Nationwide Sprint Network, depending on coverage and network availability. Roaming is not available on the Sprint 4G Network at this time.

Sprint Data Access Plans for Business for Third Party M2M Devices may not be used with laptops, netbooks, notebooks, tablets, or other comparable devices that involve active participation by a person. All usage must be embedded within machine-to-machine applications and M2M Devices.

Sprint Data Link Simple Connectivity. The Sprint Data Link option provides Customers simple Data Link connectivity via IPVPN or MPLS.

Third Party M2M Devices. Customer may purchase Third Party M2M Devices from a third party. Customer is not eligible to purchase any Third Party M2M Devices from Sprint.

SPRINT PUBLIC SECTOR ALL IN SMARTPHONE – RED UNLIMITED FOR ACCEPTABLE USE PLAN (SEE ACCEPTABLE USE POLICY)

The Sprint Public Sector All In Smartphone – Red Unlimited for Acceptable Use Plan offers the following to Customer Lines:

- Unlimited Anytime Minutes
- Unlimited Direct Connect® and Group Connect®
- Voice Roaming
- Caller ID & Voice Mail
- Unlimited for Acceptable Use Internet Browsing and E-Mail
- Data Roaming
- Unlimited Domestic Messaging
- Premium Data

If Customer Line's data roaming usage in a given month exceeds the Data Roaming limitation, Customer Line will be liable for the overage charges. Customer Line may be liable for both overage charges if Customer Line's usage in a given month exceeds the Data Services limitation (see reference to Acceptable Use Policy) and the Data Roaming limitation.

Wireless high speed data coverage is not available everywhere and requires a wireless high speed data-compatible device. Where the wireless high speed data network is available and a wireless high speed data-compatible device is used, Customer Lines will first attempt to connect to the Sprint 4G Network, then the Sprint 3G Network, and then will default to the Nationwide Sprint Network depending on coverage and network availability. Roaming is not available on the Sprint 4G Network at this time. Premium Services content is not available with this Business Plan.

Direct Connect and Group Connect are available on select devices. Additional features, including, but not limited to, TeamDC, are available with certain devices and may be subject to an additional charge.

Sprint Unlimited Series 65 Unlimited for Acceptable Use Plan (See Acceptable Use Policy)

The Sprint Unlimited Series 65 Unlimited for Acceptable Use Plan offers the following to Customer Lines:

- Unlimited Anytime Minutes
- Unlimited Direct Connect® and Group Connect®
- Caller ID & Voice Mail
- Voice Roaming
- Unlimited for Acceptable Use Internet Browsing and E-Mail
- Data Roaming
- Unlimited Domestic Messaging
- Premium Data
- Only available for select devices: Samsung Galaxy J3 and other compatible devices agreed upon by the parties (lower tier smartphones), including Certified Pre-Owned Devices, such as a Certified Pre-Owned iPhone 5S.

If Customer Line's data roaming usage in a given month exceeds the Data Roaming limitation, Customer Line will be liable for the overage charges. Customer Line may be liable for both overage charges if Customer Line's usage in a given month exceeds the Data Services limitation (see reference to Acceptable Use Policy) and the Data Roaming limitation.

Wireless high speed data coverage is not available everywhere and requires a wireless high speed data-compatible device. Where the wireless high speed data network is available and a wireless high speed data-compatible device is used, Customer Lines will first attempt to connect to the Sprint 4G Network, then the Sprint 3G Network, and then will default to the Nationwide Sprint Network depending on coverage and network availability. Roaming is not available on the Sprint 4G Network at this time. Premium Services content is not available with this Business Plan.

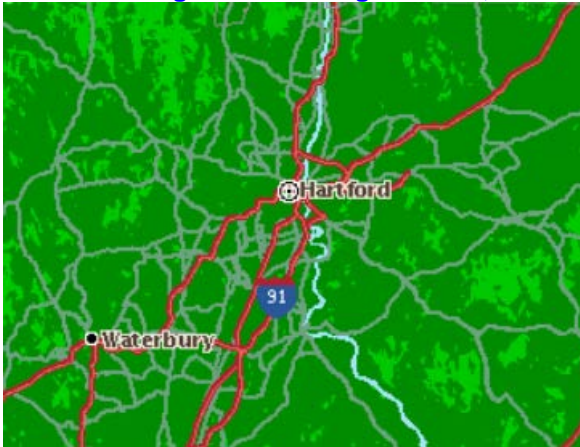
Direct Connect and Group Connect are available on select devices. Additional features, including, but not limited to, TeamDC, are available with certain devices and may be subject to an additional charge.

ACCEPTABLE USE POLICY

Sprint hereby provides notice to the Customer that Sprint has an Acceptable Use Policy that ensures the protection of Sprint's Network for its customers. In the event Sprint, at its sole discretion, determines a Customer Line is engaging in illegal or harmful use that cause network degradation, Sprint will formally notify the Customer and request that such use be discontinued. If the Customer Line, after formal notification is given, continues to engage in illegal or harmful use that cause network degradation, Sprint will notify the Customer Line of its intent to modify or throttle the Customer Line's wireless data Service which may also include suspension of service. If the Customer Line still continues to engage in illegal or harmful use, Sprint will modify, throttle, or suspend service as applicable.

COVERAGE MAPS

Voice Coverage Surrounding Hartford, CT



Voice Coverage Legend:



Sprint Coverage – Best

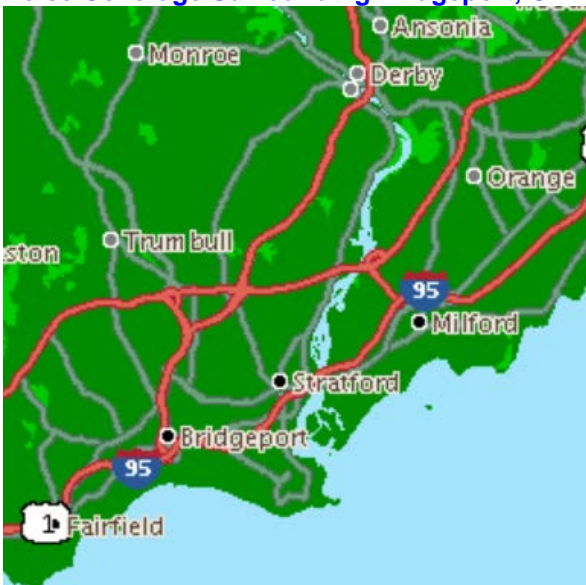


Sprint Coverage – signal strength varies

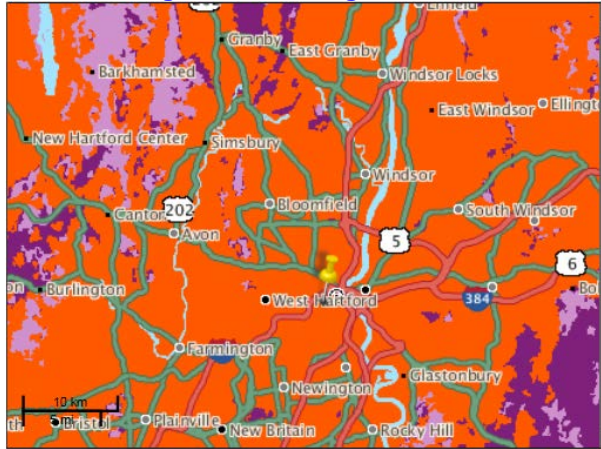
Voice Coverage Surrounding New Haven, CT



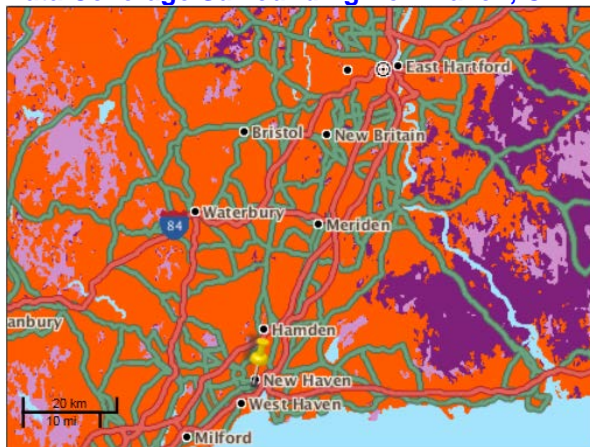
Voice Coverage Surrounding Bridgeport, CT



Data Coverage Surrounding Hartford, CT



Data Coverage Surrounding New Haven, CT



Data Coverage Surrounding Bridgeport, CT



Data Coverage Legend:

- Sprint 4G LTE
Now in select markets -- and expanding fast.
Map shows estimate of outdoor coverage
- Sprint 3G & more
Filter coverage by [Sprint 3G & more](#) for more info
- Off-network roaming
- No coverage

DAS MASTER AGREEMENT NUMBER: B-04-002					DAS APPROVAL DATE: 7/12/2016					
VENDOR NAME: Nextel Communications										
SERVICE NAME: Wireless Service and Equipment: Service										
Activity (Add, Delete, Change)	Date of Vendor Request	Date Approved By DAS	Item	Item Code	Description of Service/Equipment	Unit	Non- Recurring Cost	Monthly Recurring Charge	Monthly Cost (with CT State 25% discount - Applies to Basic Monthly Recurring Charge)	Per Unit Cost (Usage)
					<u>Sprint Flat Rate Business Plan</u>					
Add	10/19/11	11/10/11	1b	U3169D	Flat Rate Plan- DC on Sprint	line		\$4.00		
Add	10/19/11	11/10/11	1c	C1266	Flat Rate Plan- CDMA	line		\$4.00		
Add	10/19/11	11/10/11	1d	U3169RC	Flat Rate Plan	line		\$4.00		
Add	03/12/09	03/31/09	2		Cellular Usage	min.				\$0.05
					<u>Sprint Business Essentials Plans- 9pm</u>					
Add	10/19/11	11/10/11	3b	U2766D	Add a Phone- DC on Sprint 0 Anytime Minutes	line		\$20.00	\$15.00	
Add	10/19/11	11/10/11	3c	BE2779	Add a Phone- CDMA 0 Anytime Minutes	line		\$20.00	\$15.00	
Add	10/19/11	11/10/11	4b	U2767D	400 Anytime Minutes- DC on Sprint	line		\$39.99	\$29.99	
Add	10/19/11	11/10/11	4c	BE2780	400 Anytime Minutes- CDMA	line		\$39.99	\$29.99	
Add	10/19/11	11/10/11	5b	U2768D	1000 Anytime Minutes- DC on Sprint	line		\$59.99	\$44.99	
Add	10/19/11	11/10/11	5c	BE2781	1000 Anytime Minutes- CDMA	line		\$59.99	\$44.99	
Add	10/19/11	11/10/11	6b	U2769D	1400 Anytime Minutes- DC on Sprint	line		\$79.99	\$59.99	
Add	10/19/11	11/10/11	6c	BE2782	1400 Anytime Minutes- CDMA	line		\$79.99	\$59.99	
Add	10/19/11	11/10/11	7b	U2770D	2000 Anytime Minutes- DC on Sprint	line		\$99.99	\$74.99	
Add	10/19/11	11/10/11	7c	BE2783	2000 Anytime Minutes- CDMA	line		\$99.99	\$74.99	
Add	10/19/11	11/10/11	8b	U2771	2800 Anytime Minutes- DC on Sprint	line		\$129.99	\$97.49	
Add	10/19/11	11/10/11	8c	BE2784	2800 Anytime Minutes- CDMA	line		\$129.99	\$97.49	
Add	10/19/11	11/10/11	9b	U2772D	4500 Anytime Minutes- DC on Sprint	line		\$199.99	\$149.99	
Add	10/19/11	11/10/11	9c	BE2786	4500 Anytime Minutes- CDMA	line		\$199.99	\$149.99	
Add	03/12/09	03/31/09	10		Sprint Nextel Business Essentials Plans - Cellular overage per minute	min.				\$0.40
Add	10/19/11	11/10/11	10a	RETM2MU5	Unlimited Mobile to Mobile Min	line		\$5.00		
					<u>Text Messaging</u>					
Add	03/12/09	03/31/09	11		Pay as You Go Text Messaging	msg.				\$0.20
Add	03/12/09	03/31/09	12	SMS300RN5	300 Text Messages	line		\$5.00	\$3.75	
Add	10/19/11	11/10/11	12b	SMS300R5	300 Text Messages-CDMA	line		\$5.00	\$3.75	
Add	02/14/12	02/27/12	12c	PDSMSG5	300 Text Messages	line		\$5.00	\$3.75	
Add	03/12/09	03/31/09	13	SMSULRN20	Unlimited Text Messages	line		\$20.00	\$15.00	
Add	10/19/11	11/10/11	13b	SMSUNLR20	Unlimited Text Messages- CDMA	line		\$20.00	\$15.00	
Add	05/15/12	06/04/12	13c	SMS1KRN10	1000 Text Messages	line		\$10.00		
Add	05/15/12	06/04/12	13e	SMS1KR10	1000 Text Messages-CDMA	line		\$10.00		
Add	05/15/12	06/04/12	13f	PDSMSG10T	1000 Text Messages	line		\$10.00		
					<u>SPRINT Direct Connect Talkgroup</u>					
Add	03/12/09	03/31/09	14	DCSTM250	250 Talkgroup Minutes	line		\$10.00	\$7.50	
Add	10/19/11	11/10/11	14a	GRP250	250 Talkgroup Minutes	line		\$10.00	\$7.50	
Add	10/19/11	11/10/11	14b	DCNUNLTD5	Direct Connect & Group Connect	line		\$5.00	\$3.75	
					<u>BlackBerry Plans</u>					
Add	10/19/11	11/10/11	15-1	PDSBC1999	BlackBerry Email and Web Plan Unlimited (EVDO Phones)- CDMA	line		\$19.99		
Add	04/30/09	05/01/09	15a	PDSBWW69	WorldWide BlackBerry Email and Web Plan	line		\$69.99	\$52.49	
Add	10/19/11	11/10/11	15a-1	PDSBWW69E	WorldWide BlackBerry Email and Web Plan	line		\$69.99	\$52.49	
Add	02/14/12	02/27/12	15a-2	PDSB69WW	WorldWide BlackBerry Email and Web Plan	line		\$69.99	\$52.49	
Add	04/30/09	05/01/09	15b		● Voice	min				\$0.20
Add	04/30/09	05/01/09	15c		● Long Distance	min				\$0.25
Add	04/30/09	05/01/09	15d		● Off Network Roaming	min				\$0.69
Add	04/30/09	05/01/09	15e		● Off Network Long Distance	min				\$0.25
					<u>EVDO Connection Card Data</u>					

VENDOR NAME: Nextel Communications

SERVICE NAME: Wireless Service and Equipment: Service

Activity (Add, Delete, Change)	Date of Vendor Request	Date Approved By DAS	Item	Item Code	Description of Service/Equipment	Unit	Non- Recurring Cost	Monthly Recurring Charge	Monthly Cost (with CT State 25% discount - Applies to Basic Monthly Recurring Charge)	Per Unit Cost (Usage)
Change	09/21/09	09/22/09	16	PDSPC3993	Unlimited Data (No Cap) for for EVDO, 1XRTT, and REV A cards and Data Access Devices	plan		\$39.99		
Add	10/19/11	11/10/11	16a	PDSPC3993RC	Unlimited Data (No Cap) for for EVDO, 1XRTT, and REV A cards and Data Access Devices	plan		\$39.99		
				<u>Wireless Priority (Cellular) Service without PSVP</u>						
Add	03/12/09	03/31/09	19		Wireless Priority Service	min				\$0.75 plus toll charges
Change	10/19/11	11/10/11	20	DA140DISC	411 Directory Assistance	call				\$1.79 plus plan per minute rate
Change	10/19/11	11/10/11	21	PDSSTATIC	Standard Static IP Address (CDMA)	plan		\$3.00	\$2.25	
Add	08/12/09	08/14/09	22		International Calling - Canada (No plan)	min				\$0.59
					<u>SprintLink Frame Relay Plans</u>					
					<u>Domestic Bundled Port and Access</u>					
Add	07/17/15	09/05/15	29		256k/T1 Access (NPA/NXX 860-594) w/Bundled MRC (ACF and COC waived) (previously cancelled in error)	circuit	\$1000 waived	\$459.00		
					<u>Airave</u>					
Change	09/12/14	10/06/14	36	AIRAVENOV	AIRAVE Coverage Only (HPPTT)	per device		\$4.99	\$3.74	
Change	09/12/14	10/06/14	36a	AIRAVE0RT	AIRAVE Coverage Only (HPPTT)	per device		\$0.00	\$0.00	
Change	09/12/14	10/06/14	36b	AIRAVE2CV	AIRAVE Coverage Only (HPPTT)	per device		\$0.00	\$0.00	
				<u>BLACKBERRY TECHNICAL SUPPORT SERVICES</u>						
Add	12/16/09	12/29/09	37	TXADVAPFBES	SMB Advantage Support (initial 30 users)	initial 30 active CALs per year	\$1,499.00			
Add	12/16/09	12/29/09	38	TXADVAC999	SMB Advantage Support (active CALs 31 and 99)	per active CAL per year	\$27.00			
Add	12/16/09	12/29/09	39	TXADVAC999	SMB Advantage Support (active CALs 100 and 499)	per active CAL per year	\$25.65			
Add	12/16/09	12/29/09	40	TXADVAC999	SMB Advantage Support (active CALs 500 and 999)	per active CAL per year	\$24.30			
				<u>In-Store/Assigned Care Repair/Replacements</u>						
Add	02/09/11	06/10/11	47		Customers will be charged a flat fee <u>regardless of warranty period</u> for in-store services	Per-Incident		N/A	N/A	\$35.00
Add	05/01/12	06/04/12	47a		Customers will be charged a flat fee <u>regardless of warranty period</u> for assigned care representatives services	Per-Incident		N/A	N/A	\$35.00
				<u>PDV CONNECT</u>						
Change	09/12/14	10/06/14	48	PDSNML56C	PDV Connect	Per line		\$5.63	N/A	N/A
Change	09/12/14	10/06/14	49	PDSNML14	PDV Connect Pro	Per line		\$14.99	N/A	N/A
Change	04/18/16	05/10/16	71	TBD	3G/4G Connection Card Plan with 100MB Data Roaming Limitation (See Note F & G)	Per Line	\$0.00	\$32.99	N/A	\$0.25/MB additional data roaming usage above 100MB
				<u>SPRINT TIERED TABLET DATA PLANS</u>						
Add	09/12/14	10/06/14	74	TBD	Sprint Tier Tablet Plan: Unlimited (see reference to Acceptable Use Policy) with additional 100MB data Roaming Limitation (See Note F, G & H)	Per Line	\$0.00	\$37.99	N/A	\$0.25/MB additional data roaming usage above data roaming limitation
Add	09/12/14	10/06/14	75	TBD	Sprint Mobile HotSpot Add-On Plan for Tiered Tablet Data Plans: 2GB Data Services Limitation (See Note G & I)	Per Line	\$0.00	\$10.00	N/A	\$0.05/MB for additional data Services usage above data Services Limitation

VENDOR NAME: Nextel Communications

SERVICE NAME: Wireless Service and Equipment: Service

Activity (Add, Delete, Change)	Date of Vendor Request	Date Approved By DAS	Item	Item Code	Description of Service/Equipment	Unit	Non- Recurring Cost	Monthly Recurring Charge	Monthly Cost (with CT State 25% discount - Applies to Basic Monthly Recurring Charge)	Per Unit Cost (Usage)
Add	09/12/14	10/06/14	76	TBD	Sprint Mobile HotSpot Add-On Plan for Tiered Tablet Data Plans: 6GB Data Services Limitation (See Note G & I)	Per Line	\$0.00	\$37.99	N/A	\$0.05/MB for additional data Services usage above data Services Limitation
					<u>3G/4G EMBEDDED CONNECTION PLANS</u>					
Add	09/12/14	10/06/14	77	TBD	3G/4G Embedded Connection Plan purchased via Assigned Local Account Manager only: 5GB Data Services Limitation with 300MB Data Services Roaming Limitation MRC- With Credit (See Note G)	Per Line	\$0.00	\$47.99	N/A	\$0.05/MB for additional data Services usage above data Services Limitation; \$0.25/MB additional data roaming usage above 300MB data roaming limitation
					<u>SPRINT CONNECTICUT CHOICE ECONOMY PLAN</u>					
Add	09/12/14	10/06/14	78	TBD	Sprint Government Choice Economy Plan: 400 Anytime Minutes with Anytime Minutes overage, Unlimited Sprint Mobile-to-Mobile beginning at 7PM, Unlimited Sprint Direct Connect and Group Connect, Nationwide Long Distance Included, Unlimited Internet Browsing and E-Mail Included, Premium Data Add-On Included, Data Roaming Included, and No Shared Minutes (See Note J)	Per Line	\$0.00	\$49.99	N/A	\$0.25/min Anytime Minutes Overage
					<u>SPRINT CONNECTICUT CHOICE VALUE PLAN</u>					
Change	11/05/14	11/17/14	79	TBD	Sprint Government Choice Value Plan: 400 Anytime Minutes with Anytime Minutes Overage, Unlimited Sprint Mobile-to-Mobile beginning at 7PM, Unlimited Sprint Direct Connect and Group Connect, Nationwide Long Distance Included, Caller ID & Voicemail, Unlimited Internet Browsing and E-Mail Included, Unlimited Messaging, Premium Data Add-On Included, Data Roaming with per KB charge, and No Shared Minutes (See Note J)	Per Line	\$0.00	\$47.99	N/A	\$0.25/min Anytime Minutes Overage; \$0.002/KB Data Roaming
					<u>SPRINT® BUSINESS FUSION PLANS FOR SMART PHONES AND FEATURE PHONES (See Note Q)</u>					
Change	04/18/16	05/10/16	80	TBD	Sprint® Business Fusion Smartphone Unlimited Talk and Text Plan – Includes Unlimited Domestic Voice, Text, Direct Connect®, and Group Connect.	Per Line	\$0.00	\$35.00	N/A	(\$10/GB) overage charge for Sprint Mobile Hotspot usage exceeding 3GBs.
Change	04/18/16	05/10/16	81	TBD	Sprint® Business Fusion Smartphone Unlimited Data Plan. Data allowance includes Sprint Mobile Hotspot usage for Sprint Mobile Hotspot capable devices. Sprint Mobile Hotspot usage on Unlimited Data Plan is limited to 3GBs and does not pool.	Per Line	\$0.00	\$28.00	N/A	\$0.010/MB (\$10/GB) overage charge for Sprint Mobile Hotspot usage exceeding 3GBs.
Change	04/18/16	05/10/16	82	TBD	Sprint® Business Fusion Smartphone 2GB Data Plan (See Note K) Data allowance includes Sprint Mobile Hotspot usage for Sprint Mobile Hotspot capable devices.	Per Line	\$0.00	\$12.00	N/A	\$0.015/MB (\$15/GB) Overage charge for additional data services usage above plan limit in Megabytes ("MBs") and Gigabytes ("GBs")
Change	04/18/16	05/10/16	83	TBD	Sprint® Business Fusion Smartphone 1GB Data Plan (See Note K) Data allowance includes Sprint Mobile Hotspot usage for Sprint Mobile Hotspot capable devices.	Per Line	\$0.00	\$8.00	N/A	\$0.015/MB (\$15/GB) Overage charge for additional data services usage above plan limit in Megabytes ("MBs") and Gigabytes ("GBs")

VENDOR NAME: Nextel Communications

SERVICE NAME: Wireless Service and Equipment: Service

Activity (Add, Delete, Change)	Date of Vendor Request	Date Approved By DAS	Item	Item Code	Description of Service/Equipment	Unit	Non- Recurring Cost	Monthly Recurring Charge	Monthly Cost (with CT State 25% discount - Applies to Basic Monthly Recurring Charge)	Per Unit Cost (Usage)
Add	04/18/16	05/10/16	83a	TBD	Sprint® Business Fusion Smartphone 3GB Data Plan (See Note K) Data allowance includes Sprint Mobile Hotspot usage for Sprint Mobile Hotspot capable devices.	Per Line	\$0.00	\$16.00	N/A	\$0.015/MB (\$15/GB) Overage charge for additional data services usage above plan limit in Megabytes ("MBs") and Gigabytes ("GBs")
Add	04/18/16	05/10/16	83b	TBD	Sprint® Business Fusion Feature Phone Unlimited Talk and Text Plan – Includes Unlimited Domestic Voice, Text, Direct Connect®, and Group Connect.	Per Line	\$0.00	\$30.00	N/A	N/A
Add	04/18/16	05/10/16	83c	TBD	Sprint® Business Fusion Feature Phone Unlimited Data Plan	Per Line	\$0.00	\$5.00	N/A	N/A
					<u>TABLET PLAN (NON-POOLING)</u>					
Add	07/17/	09/04/15	84	TBD	Tablet Plan (non-pooling) 3GB (See Note L)	Per Line	\$0.00	\$26.25	N/A	Overage charge for additional data Services usage above data limitation is \$0.05 /MB; Data Roaming limitation in MB is 100MB; Overage charge for additional Roaming usage above data roaming limitation is \$0.25/MB
					<u>Custom Domestic 3G/4G LTE Unlimited for Acceptable Use Tablet Plan (see reference to Acceptable Use Policy)</u>					
Change	04/18/16	05/10/16	85	TBD	Custom Domestic 3G/4G LTE Unlimited for Acceptable Use Tablet Plan (see reference to Acceptable Use Policy) (See Note G, K, M, N)	Per Line	\$0.00	\$32.99	N/A	Data Roaming limitation is 100MB; Overage Charge for additional data Roaming usage above 300MB is \$0.25/MB
Add	04/18/16	05/10/16	85a	TBD	Sprint Mobile HotSpot Unlimited for Acceptable Use Add-On Plan for Custom Domestic 3G/4G LTE Unlimited for Acceptable Use Tablet Plan (see reference to Acceptable Use Policy) (See Note G, K, M, N)	Per Line	\$0.00	\$10.00	N/A	\$0.05/MB for additional data Services usage above data Services Limitation
					<u>SPRINT FLAT RATE PLAN FOR STATE OF CONNECTICUT</u>					
Add	07/17/15	09/04/15	86	TBD	Sprint Flat Rate Plan for State of Connecticut (See Note N)	Per Line	\$0.00	\$35.99	N/A	Data Roaming limitation 100MB, \$0.12 Per-Minute Rate for All Voice Minutes Used, including Anytime Minutes, Nationwide Long Distance, Domestic Roaming, & Domestic Roaming Long Distance; Overage charges for additional data Roaming usage above plan limit is \$0.25/MB
<u>SPRINT DATA ACCESS PLANS FOR BUSINESS FOR THIRD PARTY M2M DEVICES</u>										
Add	07/17/15	09/04/15	87	TBD	1MB - Data Pooling is included	Per Line	N/A	\$4.00	N/A	\$1.00/per line overage per MB.
Add	07/17/15	09/04/15	88	TBD	5MB - Data Pooling is included	Per Line	N/A	\$6.00	N/A	\$1.00/per line overage per MB.

VENDOR NAME: Nextel Communications										
SERVICE NAME: Wireless Service and Equipment: Service										
Activity (Add, Delete, Change)	Date of Vendor Request	Date Approved By DAS	Item	Item Code	Description of Service/Equipment	Unit	Non- Recurring Cost	Monthly Recurring Charge	Monthly Cost (with CT State 25% discount - Applies to Basic Monthly Recurring Charge)	Per Unit Cost (Usage)
Add	07/17/15	09/04/15	89	TBD	25MB - Data Pooling is included	Per Line	N/A	\$8.00	N/A	\$1.00/per line overage per MB.
Add	07/17/15	09/04/15	90	TBD	100MB - Data Pooling is included	Per Line	N/A	\$10.00	N/A	\$0.015/per line overage per MB.
Add	07/17/15	09/04/15	91	TBD	1GB - Data Pooling is included	Per Line	N/A	\$15.00	N/A	\$0.015/per line overage per MB.
Add	07/17/15	09/04/15	92	TBD	3GB - Data Pooling is included	Per Line	N/A	\$35.00	N/A	\$0.015/per line overage per MB.
Add	07/17/15	09/04/15	93	TBD	6GB - Data Pooling is included	Per Line	N/A	\$50.00	N/A	\$0.015/per line overage per MB.
Add	07/17/15	09/04/15	94	TBD	12GB - Data Pooling is included	Per Line	N/A	\$60.00	N/A	\$0.015/per line overage per MB.
Add	07/17/15	09/04/15	95	TBD	30GB - Data Pooling is included	Per Line	N/A	\$110.00	N/A	\$0.015/per line overage per MB.
Add	07/17/15	09/04/15	96	TBD	Sprint Data Link - Simple Data Link Connectivity (See Note O)	Per Line	\$500.00	\$0.00	\$0.00	N/A
Add	08/21/15	09/04/15	97	TBD	128k MPLS Port (See Note P)	Per Circuit	\$1,000 waived	\$225.00	\$0.00	N/A
Add	08/21/15	09/04/15	98	TBD	256k MPLS Port (See Note P)	Per Circuit	\$1,000 waived	\$312.00	\$0.00	N/A
Add	08/21/15	09/04/15	99	TBD	512k MPLS Port (See Note P)	Per Circuit	\$1,000 waived	\$425.00	\$0.00	N/A
Add	08/21/15	09/04/15	100	TBD	768k MPLS Port (See Note P)	Per Circuit	\$1,000 waived	\$475.00	\$0.00	N/A
Add	08/21/15	09/04/15	101	TBD	1536k (1.5M) MPLS Port (See Note P)	Per Circuit	\$1,000 waived	\$500.00	\$0.00	N/A
SPRINT PUBLIC SECTOR ALL IN SMARTPHONE – RED UNLIMITED FOR ACCEPTABLE USE PLAN (SEE ACCEPTABLE USE POLICY)										
Add	05/25/16	06/09/16	102	TBD	Sprint Public Sector All In Smartphone - Red Unlimited for Acceptable Use Plan (Note G,L)	Per Line	N/A	\$44.99	\$0.00	N/A
SPRINT UNLIMITED SERIES 65 UNLIMITED FOR ACCEPTABLE USE PLAN										
Add	05/25/16	06/09/16	103	TBD	Sprint Unlimited Series 65 Unlimited for Acceptable Use Plan(Note G,L)	Per Line	N/A	\$30.00	\$0.00	N/A
					Sprint Unlimited Series 65 Unlimited for Acceptable Use Plan. Only available for select devices: Samsung Galaxy J3 and other compatible devices agreed upon by the parties (lower tier smartphones), including Certified Pre- Owned Devices, such as a Certified Pre-Owned					
Change	06/29/16	07/12/16	103	TBD	iPhone 5S (Note G,L)	Per Line	N/A	\$30.00	\$0.00	N/A
NOTES:										
Note B		Overage billing will only be paid by the State when Sprint provides detail billing that enables the State to validate the contract rate.								
Note C		Android device plans are only allowed on Android devices ordered thru DAS/BEST/Telecom.								
Note E	Delete 04/18/16	The 5,000 unit counts for "lines managed" is a compilation of all the units activated under the Executive, Legislative and Judicial branches of the State of Connecticut (CL=Commitment Level)								
Note F		Unlimited use available while on the Sprint network. Sprint's Acceptable Use Policy applies if such Wireless Data Connection Device exceeds 5GB/month of data usage, 100 MB/month of usage while Roaming on the Sprint network. See reference to Acceptable Use Policy in Description Document.								
Note G		Sprint's Acceptable Use Policy applies if a wireless Product engages in any prohibited data uses or if Sprint, in its sole discretion, determines action is necessary to protect the Sprint Networks or Sprint 4G Network from harm or degradation. Sprint wireless data Services may not be used: (a) to generate excessive amounts of Internet traffic through continuous, unattended streaming, downloading or uploading of videos or other files or to operate hosting services including, but not limited to, web, or video surveillance; (b) to maintain continuous active network connections to the Internet such as through a web camera or machine-to-machine connections that do not involve active participation by a person; (c) to disrupt email use by others using automated or manual routines, including, but not limited to, "auto-responders" or cancel bots or other similar routines; (d) to transmit or facilitate any unsolicited or unauthorized advertising, telemarketing, promotional materials, "junk mail", unsolicited commercial or bulk email, or fax; (e) for activities adversely affecting the ability of other people or systems to use either Sprint's Wireless Services or other parties' Internet-based resources, including, but not limited to, "denial of service" (DoS) attacks against another network host or individual user; (f) for an activity that connects any device to personal computers (including, but not limited to, laptops), or other equipment for the purpose of transmitting wireless data over the Sprint Networks or Sprint 4G Network (unless Customer is using a plan designated for such usage); (g) by a Wireless Data Connection Device in excess of: (i) the total data usage allowed by Customer's plan, (ii) 100 MB/month while Roaming in total, or (iii) a majority of kilobytes while Roaming; provided that Customer's Wireless Data Connection Devices on "unlimited" Business Plans will not be subject to the Data Services limitation but are subject to the Roaming limitations; or (h) for any other reason that, in Sprint's sole discretion, violates Sprint's policy of providing Service for individual use. See reference to Acceptable Use Policy in Description Document.								

VENDOR NAME: Nextel Communications

SERVICE NAME: Wireless Service and Equipment: Service







Activity (Add, Delete, Change)	Date of Vendor Request	Date Approved By DAS	Item	Item Code	Description of Service/Equipment	Unit	Non- Recurring Cost	Monthly Recurring Charge	Monthly Cost (with CT State 25% discount - Applies to Basic Monthly Recurring Charge)	Per Unit Cost (Usage)
Note H					The data Services overage charges set forth in the table above apply only to tablets compatible with the Sprint 4G LTE Network. Tablets compatible with the Sprint 4G LTE Network are not eligible for wireless device discounts, service credits or rebates, but may be eligible for certain promotions, which will be identified in the Product Schedule.					
Note I					The Data Roaming limitation is 100MB. The combined Data Roaming usage from both the device and Mobile Hotspot contributes to the Data Roaming limitation. All data usage (device and Mobile Hotspot) will count against the Sprint Mobile Hotspot Add-On Data Services limitation when the Mobile Hotspot functionality is turned on.					
Note J					Wireless high speed data coverage is not available everywhere and requires a wireless high speed data-compatible phone. Where the wireless high speed data network is available and a wireless high speed data-compatible phone is used, Customer Active Units will first attempt to connect to the Sprint 4G Network, then the Sprint 3G Network, and then will default to the Nationwide Sprint Network depending on coverage and network availability. Direct Connect and Group Connect are available on select devices.					
Note K					The data allowance for Smartphone Data Plans includes any Sprint Mobile Hotspot usage for Sprint Mobile Hotspot capable devices. Sprint Mobile Hotspot usage on the Unlimited Data Plan is limited to 3GBs of usage and does not pool. A per MB or per GB overage charge applies if the Customer Lines Sprint Mobile Hotspot usage on the Unlimited Data Plan exceeds 3GBs. Roaming is limited to 100MBs or a majority of kilobytes ("KBs") for all Smartphone Data Plans. This Roaming limitation includes Sprint Mobile Hotspot usage. Roaming is not available on the Sprint 4G Network at this time.					
Note L					All pricing and available MBs and GBs are the same whether Corporate-Liable Active Units use the Sprint 4G Network (if included), the Sprint 3G Network or the Nationwide Sprint Network. Sprint 3G Network coverage is not available everywhere and requires an EVDO-compatible data device. When the Sprint 3G Network is available and Customer uses a Sprint EVDO-compatible device with a wireless high-speed data Business Plan, Active Units will first attempt to connect to the Sprint 3G Network, and then default to the Nationwide Sprint Network depending on coverage and network availability. When the Sprint 4G Network is available and Customer uses a Sprint 4G-compatible device with a Business Plan for Sprint 4G Services, Active Units will first attempt to connect to the Sprint 4G Network, and then default to the Sprint 3G Network or Nationwide Sprint Network depending on coverage and network availability. Data usage on the Sprint 4G Network requires a 4G capable device. Additional charges apply for messaging service. .					
Note M					(1) The Custom Domestic 3G/4G LTE Tablet Plan includes unlimited data usage on the Sprint 4G Network, the Sprint 3G Network and the Nationwide Sprint Network. All pricing and available MBs are the same whether Corporate-Liable Active Units use the Sprint 4G Network, the Sprint 3G Network or the Nationwide Sprint Network. Wireless high speed data coverage is not available everywhere and requires a wireless high speed data-compatible device. Where the wireless high speed data network is available and a wireless high speed data-compatible device is used, Corporate-Liable Active Units will first attempt to connect to the Sprint 4G Network, then the Sprint 3G Network, and then will default to the Nationwide Sprint Network depending on coverage and network availability. (2) Roaming is not available on the Sprint 4G Network at this time. (3) Premium Services content is not available with this Business Plan.					
Note N					If Customer's data roaming usage in a given month exceeds the Data Roaming limitation, Customer will be liable for the overage charges set forth in the table above. Customer may be liable for both overage charges if Customer's usage in a given month exceeds the Data Services limitation and the Data Roaming limitation. Wireless high speed data coverage is not available everywhere and requires a wireless high speed data-compatible phone. Where the wireless high speed data network is available and a wireless high speed data-compatible phone is used, Corporate-Liable Active Units will first attempt to connect to the Sprint 4G Network, then the Sprint 3G Network, and then will default to the Nationwide Sprint Network depending on coverage and network availability.					
Note O					Any non-recurring charge (NRC) associated with the implementation of Simple Data Link connectivity, will be credited through an Account Tetam Sales Concession for any instance where a qualified customer purchase Sprint Data Link connectivity from the contract that the State of Connecticut has with Sprint.					
Note P					Access pricing is based on specific Customer Line location and the LEC/AAV provider. Access pricing will be priced separately.					
Note Q	Added 4/18/16				Sprint Business Fusion Unlimited Talk & Text Plan Discount: If a Billing Account Number has at least 25 Customer Lines active on Sprint Business Fusion Plans, that Billing Account Number will receive a discount off the Sprint Business Fusion Smartphone Data Plan and Feature Phone Data Plans MRCs listed above as follows: 25-99 active Customer Lines on a Billing Account Number will receive 10% off the Sprint Business Fusion Smartphone Data Plan or Feature Phone Data Plan MRC; 100+ active Customer Lines on a Billing Account Number will receive 20% ff the Sprint Business Fusion Smartphone Data Plan or Feature Phone Data Plan MRC. (1) Pooled Data Plan Discount. Customer Line will receive a \$10 monthly discount off a 3GB or greater pooled data plan for Unsubsidized tables, mobile broadband devices and routers. Discounts are applied within 2 bill cycles and discounts are not prorated. (2) No Service Discount Pricing. The Service Discount Pricing is not applicable to any Sprint Business Plans MRCs.					

NOTE: Grey highlighted items are no longer available. They have been either deleted or changed, and/or no longer apply

DAS MASTER AGREEMENT NUMBER:	B-04-002	DAS APPROVAL DATE:	3/17/2017
------------------------------	----------	--------------------	-----------

VENDOR NAME: Sprint Nextel

SERVICE/PRODUCT NAME: Wireless Service and Equipment: Equipment

Basic Phones			
			
Device	Kyocera DuraPlus (PRO 375)	Kyocera DuraXTP	Alcatel OneTouch Retro
Price	FREE	FREE	FREE
Item Number (pricing pages)	88	151	135
Category	Basic Phone	Basic Phone	Basic Phone
Phone Features			
Bluetooth Enabled	•	•	•
Camera		•	•
GPS Enabled		•	•
IP68 Certified			
Micro-SD Slot		•	
Military Spec 810G Certified	•	•	
Physical Keyboard			
Sprint Direct Connect / Group Connect	•	•	
Hearing Aid Compatible		•	
Phone Details			
Dimensions	5.3 x 2.2 x 1.0 in.	4.52" x 2.12" x 0.58"	4.11 x 2.05 x 0.72 in.
Battery Type	1650 mAh Li-Ion	1360 mAh Li-Ion	850 mAh Li-Ion
Weight w/Battery (oz)	6.7 oz	5.3 oz.	
Talk Time	9.5 hours	Up to 9.2 hours	
Basic Phones			
			
Device	Sonim XP Strike IS (3420)	Sonim XP Strike (3410)	Alcatel OneTouch Cinch
Price	FREE	FREE	FREE
Item Number (pricing pages)	147	148	162
Category	Basic Phone	Basic Phone	Basic Phone
Phone Features			
Bluetooth Enabled	•	•	•
Camera		•	
GPS Enabled	•	•	
IP68 Certified	•	•	
Micro-SD Slot	•	•	
Military Spec 810G Certified	•	•	
Physical Keyboard			
Sprint Direct Connect / Group Connect	•	•	
Phone Details			
Dimensions	5 x 2.4 x 1.2 in.	4.95 x 2.3 x .98 in.	4.29 x 1.77 x .51 in.
Battery Type	1960 mAh Li-Ion	1950 mAh Li-Ion	750 mAh Li-Ion
Weight w/Battery (oz)		6.5 oz.	2.43 oz.
Talk Time	Up to 8.5 hours	Up to 8.3 hours	Up to 4 hours

VENDOR NAME: Sprint Nextel**SERVICE/PRODUCT NAME: Wireless Service and Equipment: Equipment**

Smart Phones - Android			
	Kyocera DuraForce PRO	Samsung Galaxy J3 Emerge	LG Tribute 5
Device	Kyocera DuraForce PRO	Samsung Galaxy J3 Emerge	LG Tribute 5
Price	FREE	FREE	FREE
Item Number (pricing pages)	169	170	171
Category	Smartphones - Android	Smartphones - Android	Smartphones - Android
Phone Features			
3G and 4G LTE Network Access	●		●
Bluetooth Enabled	●	●	●
Camera	●	●	●
GPS Enabled		●	●
HD Voice Capable		●	●
Hearing Aid Compatible		●	
International (HSDPA/GSM)	●		
IP68 Certified	●		
Micro-SD Slot	●		●
Military Spec 810G Certified	●		
Mobile Hotspot Capable	●		●
Near Field Communication Capable	●		
Sprint Direct Connect / Group Connect	●		
Sprint Direct Connect Now Capable			
Wi-Fi Calling Capable			
Wi-Fi Data Capable	●		●
Phone Details			
Dimensions	2.89" x 5.84" x 0.51"	5.53 x 2.7 x 0.34 in	5.65 x 2.85 x 0.35 in.
Battery Type	3240mAh Lithium-ion battery (embedded)	Removable 2600 mAh Lithium Ion battery	2125 mAh Li-Ion
Weight w/Battery (oz)	10.55 oz	4.86oz	4.88 oz.
Talk Time	Up to 20 hours	up to 22 Hrs	Up to 14.5 hours
Smart Phones - Android			
	Samsung Galaxy S7	LG G5	Samsung Galaxy Note 5 (32GB)
Device	Samsung Galaxy S7	LG G5	Samsung Galaxy Note 5 (32GB)
Price	FREE	FREE	\$50.00
Item Number (pricing pages)	152	153	154
Category	Smartphones - Android	Smartphones - Android	Smartphones - Android
Phone Features			
3G and 4G LTE Network Access	●		●
Bluetooth Enabled	●		●
Camera	●	●	●
GPS Enabled	●	●	●
HD Voice Capable		●	●
Hearing Aid Compatible	●		●
International (HSDPA/GSM)			●
Micro-SD Slot	●		
Military Spec 810G Certified			
Mobile Hotspot Capable	●	●	●
Near Field Communication Capable			
Sprint Direct Connect / Group Connect			
Sprint Direct Connect Now Capable			●
Wi-Fi Calling Capable		●	●
Wi-Fi Data Capable	●	●	●
Phone Details			
Dimensions	5.6 x 2.7 x 0.3 in.	5.88" X 2.91" X 0.30"	6.0 x 3.0 x 0.3 in.
Battery Type	3,000 mAh Li-Ion	2800 mAh	3,000 mAh Li-Ion
Weight w/Battery (oz)	5.4 oz.	5.6 oz	5.4 oz.
Talk Time	Up to 28 hours	Up to 26 hours	Up to 28 hrs

VENDOR NAME: Sprint Nextel**SERVICE/PRODUCT NAME: Wireless Service and Equipment: Equipment****Smart Phones - IOS**

Device	Apple iPhone 7 (32GB)	Apple iPhone 7 Plus (32GB)	Apple iPhone SE (16GB)	Apple iPhone 6S (32GB)
Price	\$99.99	\$219.99	FREE	FREE
Item Number (pricing pages)	166	167	168	164
Category	Smart Phones - IOS	Smart Phones - IOS	Smart Phones - IOS	Smart Phones - IOS
Device Features				
3G and 4G LTE Network Access	●	●	●	●
Bluetooth Enabled	●	●	●	●
Camera	●	●	●	●
GPS Enabled	●	●	●	●
Hearing Aid Compatible	●	●	●	●
Intelligent Assistant	●	●	●	●
International (HSDPA/GSM)	●	●	●	●
Mobile Hotspot Capable	●	●	●	●
Near Field Communication Capable	●	●	●	●
Wi-Fi Calling Capable	●	●	●	●
Wi-Fi Data Capable	●	●	●	●
Phone Details				
Dimensions	5.44 x 2.64 x .28 in.	6.23 x 3.07 x .29 in.	4.87 x 2.31 x .3 in.	5.44 x 2.64 x .28 in.
Battery Type	Li-Ion	Li-Ion	Built in Li-Ion	Li-Ion
Weight w/Battery (oz)	4.87 oz.	6.63 oz.	3.99 oz.	4.87 oz.
Talk Time	Up to 14 hours	Up to 21 hrs.	Up to 14 hours	Up to 14 hours

Smart Phones - IOS

Device	Apple iPhone 6S Plus 16 GB	Apple iPad Mini 4 (16 GB)	Apple iPad Mini 4 (64 GB)	Apple iPad Mini 4 (128 GB)
Price	\$99.99	\$329.99	\$429.99	\$529.99
Item Number (pricing pages)	150	156	157	158
Category	Smart Phones - IOS	Tablets - IOS	Tablets - IOS	Tablets - IOS
Device Features				
3G and 4G LTE Network Access	●	●	●	●
Bluetooth Enabled	●	●	●	●
Camera	●	●	●	●
GPS Enabled	●	●	●	●
Hearing Aid Compatible	●	●	●	●
Intelligent Assistant	●			
International (HSDPA/GSM)	●			
Mobile Hotspot Capable	●			
Near Field Communication Capable		●	●	●
Wi-Fi Calling Capable				
Wi-Fi Data Capable	●			
Phone Details				
Dimensions	6.22 x 3.06 x .28 in.	8 x 5.3 x .24 in.	8 x 5.3 x .24 in.	8 x 5.3 x .24 in.
Battery Type	Li-Ion	19.1 wH Li-Polymer	19.1 wH Li-Polymer	19.1 wH Li-Polymer
Weight w/Battery (oz)	6.07 oz.	.65 lb.	.65 lb.	.65 lb.
Talk Time	Up to 24 hours	Up to 9 hours	Up to 9 hours	Up to 9 hours

VENDOR NAME: Sprint Nextel**SERVICE/PRODUCT NAME: Wireless Service and Equipment: Equipment****Tablets - IOS**

Device	Apple iPad Air 2 (16 GB)	Apple iPad Pro 9.7 (32GB)	Apple iPad Pro 12.9 (128GB)
Price	\$229.99	\$429.99	\$979.99
Item Number (pricing pages)	141	155	172
Category	Tablets - IOS	Tablets - IOS	Tablets - IOS
Device Features			
3G and 4G LTE Network Access	●	●	●
Bluetooth Enabled	●	●	●
Camera	●	●	●
GPS Enabled	●	●	●
Intelligent Assistant	●	●	●
International (HSDPA/GSM)	●		
Micro-SD Slot			
Mobile Hotspot Capable			●
Wi-Fi Data Capable	●	●	●
Phone Details			
Dimensions	9.4 x 6.6 x .24 in.	9.4 x 6.6 x .24 in.	12 x 8.68 x .27 in.
Battery Type	27.3 WH Li-Polymer	Built-in 27.5 wH Li-polymer	Built-in 38.5 whr Li-polymer
Weight w/Battery (oz)	.98 lb	.98 lbs.	1.59 lbs.
Talk Time	Up to 9 hours	Up to 9 hours	Up to 9 hours

Tablets - Android

Device	Samsung Galaxy Tab E	Samsung Galaxy Tab S2
Price	\$50.00	\$429.99
Item Number (pricing pages)	165	159
Category	Tablets - Androids	Tablets - Androids
Device Features		
3G and 4G LTE Network Access	●	
Bluetooth Enabled	●	
Camera	●	●
GPS Enabled		
Intelligent Assistant		
International (HSDPA/GSM)		
Micro-SD Slot	●	●
Mobile Hotspot Capable	●	
Wi-Fi Data Capable	●	●
Phone Details		
Dimensions		
Battery Type		
Weight w/Battery (oz)		
Talk Time		Up to 11 hours

VENDOR NAME: Sprint Nextel

SERVICE/PRODUCT NAME: Wireless Service and Equipment: Equipment

Mobile Data Devices & Other



Device	Franklin U772 USB Modem	Pocket WiFi
Price	FREE	FREE
Item Number (pricing pages)	173	145
Category	CDMA Mobile Broadband	CDMA Mobile Broadband
Phone Features		
3G and 4G LTE Network Access		●
Bluetooth Enabled		
GPS Enabled	●	
International (HSDPA/GSM)		
Micro-SD Slot	●	
Mobile Hotspot Capable		●
Sprint Spark Capable		●
Wi-Fi Data Capable		
Phone Details		
Dimensions	35 x 84.5 x 17 mm.	4.6 x 2.4 x .55 in.
Battery Type	N/A	2700 mAh Li-Ion
Weight w/Battery (oz)	39 g.	4.23 oz.
Talk Time	N/A	N/A

VENDOR NAME: [Sprint Nextel](#)

SERVICE/PRODUCT NAME: [Wireless Service and Equipment: Equipment](#)

Other



Device	NETGEAR 4G LTE/3G Gateway 6100D
Price	\$199.99
Item Number (pricing pages)	124
Phone Features	
Access to 3G and 4G networks	●
GPS Enabled	
Notebook PC	
Sprint Spark capable	●
USB Port	
Wi-Fi Capable	●
Phone Details	
Dimensions	
Battery Type	N/A
Weight w/Battery (oz)	1.6 lbs.
Talk Time	N/A

DAS MASTER AGREEMENT NUMBER: B-04-002				DAS APPROVAL DATE: 3/17/2017			
VENDOR NAME: Sprint Nextel							
SERVICE NAME: Wireless Service and Equipment: Equipment							
Activity (Add, Delete, Change)	Date of Vendor Request	Date Approved By DAS	Item	Item Code	Description of Service/Equipment (See Note A)	Unit	Price *
Add	06/28/12	08/23/12	88	KYE4233KIT (Kyocera DuraPlus	Kyocera DuraPlus (PRO 375) (IDEN i335 replacement)	ea	FREE
Add	09/16/14	10/06/14	121	NTGR341USA	NETGEAR 341U USB Modem	ea	FREE
Delete	03/07/17	03/17/17	121	NTGR341USA	NETGEAR 341U USB Modem	ea	FREE
Add	09/16/14	10/06/14	124	NTGR6100FM	NETGEAR 4G LTE Gateway 6100D	ea	\$199.99
Add	11/20/14	12/01/14	132	KYS3150KIT	Kyocera Verve (Verve Gray)	ea	FREE
Delete	03/07/17	03/17/17	132	KYS3150KIT	Kyocera Verve (Verve Gray)	ea	FREE
Add	11/20/14	12/01/14	133	KYE6715KIT	Kyocera TorqueXT (Black)	ea	\$0.99
Delete	03/07/17	03/17/17	133	KYE6715KIT	Kyocera TorqueXT (Black)	ea	\$0.99
Add	04/06/15	04/15/15	135	AL2017BKBL	Alcatel OneTouch Retro (Black/Red)	ea	FREE
Change	04/21/16	04/02/16	137	SPHG92032BKS	Samsung Galaxy S 6 (32 GB) (Black Sapphire)	ea	FREE
Delete	03/07/17	03/17/17	137	SPHG92032BKS	Samsung Galaxy S 6 (32 GB) (Black Sapphire)	ea	FREE
Change	04/21/16	04/02/16	139	LGLS996KIT	LG G Flex 2 (Platinum Silver)	ea	\$49.99
Delete	03/07/17	03/17/17	139	LGLS996KIT	LG G Flex 2 (Platinum Silver)	ea	\$49.99
Change	04/21/16	04/02/16	140	SPHG92532BKS	Samsung Galaxy S 6 Edge (32 GB) (Black Sapphire)	ea	\$99.99
Delete	03/07/17	03/17/17	140	SPHG92532BKS	Samsung Galaxy S 6 Edge (32 GB) (Black Sapphire)	ea	\$99.99
Change	04/21/16	04/02/16	141	888462003766	Apple iPad Air 2 (16 GB) (Space Gray)	ea	\$229.99
Add	04/06/15	04/15/15	145	ZTEMF975HS	Pocket WiFi	ea	FREE
Add	08/12/15	08/21/15	147	SONIS3410	Sonim XP Strike IS (Black)	ea	FREE
Add	08/12/15	08/21/15	148	SONXP3410	Sonim XP Strike (Yellow)	ea	FREE
Change	04/21/16	04/02/16	150	888462501750	Apple iPhone 6S Plus (16 GB)	ea	\$99.99
Add	04/21/16	04/02/16	151	KYE4281KIT	Kyocera DuraXTP (Black)	ea	FREE
Add	04/21/16	04/02/16	152	SPHG93032BKS	Samsung Galaxy S7 (Black)	ea	\$49.99
Change	03/07/17	03/17/17	152	SPHG93032BKS	Samsung Galaxy S7 (Black)	ea	\$49.99
Add	04/21/16	04/02/16	153	LGLS992TNKIT	LG G5 (Titan)	ea	FREE
Change	10/11/16	10/14/16	154	SPHN92032BKS	Samsung Galaxy Note 5 (Black Sapphire)	ea	\$50.00
Add	04/21/16	04/02/16	155	888462834735	Apple iPad Pro 9.7 (32GB) (Grey)	ea	\$429.99
Add	04/21/16	04/02/16	156	888462376600	Apple iPad Mini 4 (16 GB) (Space Gray)	ea	\$429.99
Change	03/07/17	03/17/17	156	888462376600	Apple iPad Mini 4 (16 GB) (Space Gray)	ea	\$329.99
Add	04/21/16	04/02/16	157	888462376631	Apple iPad Mini 4 (64 GB) (Space Gray)	ea	\$529.99
Change	03/07/17	03/17/17	157	888462376631	Apple iPad Mini 4 (64 GB) (Space Gray)	ea	\$429.99
Add	04/21/16	04/02/16	158	888462376662	Apple iPad Mini 4 (128 GB) (Space Gray)	ea	\$629.99
Change	03/07/17	03/17/17	158	888462376662	Apple iPad Mini 4 (128 GB) (Space Gray)	ea	\$529.99
Add	04/21/16	04/02/16	159	SPHT817TAB	Samsung Galaxy Tab S2	ea	\$429.99
Add	06/29/16	07/12/16	161	854798005095	Certified Pre-Owned Samsung Galaxy J3 (Gold)	ea	FREE
Delete	03/07/17	03/17/17	161	854798005095	Certified Pre-Owned Samsung Galaxy J3 (Gold)	ea	FREE
Add	10/11/16	10/14/16	162	AL1018BKIT	Alcatel OneTouch Cinch	ea	FREE
Add	10/11/16	10/14/16	163	SPHG93532BKS	Samsung Galaxy S7 Edge (Black)	ea	\$99.99
Delete	03/07/17	03/17/17	163	SPHG93532BKS	Samsung Galaxy S7 Edge (Black)	ea	\$99.99
Add	10/11/16	10/14/16	164	190198058676	Apple iPhone 6S (32GB) (Grey)	ea	FREE
Add	10/11/16	10/14/16	165	SPHT377TAB	Samsung Galaxy Tab E (Metallic Black)	ea	\$50.00
Add	10/11/16	10/14/16	166	190198072214	Apple iPhone 7 (32GB) (Black)	ea	\$99.99
Add	10/11/16	10/14/16	167	190198157430	Apple iPhone 7 Plus (32GB) (Black)	ea	\$219.99
Add	10/11/16	10/14/16	168	888462734905	Apple iPhone SE (16GB) (Grey)	ea	FREE
Add	03/07/17	03/17/17	169	KY6830KIT	Kyocera DuraForce PRO	ea	FREE
Add	03/07/17	03/17/17	170	SPHJ327SLV	Samsung Galaxy J3 Emerge	ea	FREE
Add	03/07/17	03/17/17	171	LGLS675KIT	LG Tribute 5 (Black)	ea	FREE
Add	03/07/17	03/17/17	172	888462531900	Apple iPad Pro 12.9 (128GB) (Space Grey)	ea	\$979.99
Add	03/04/17	03/17/17	173	FRKU772KIT	Franklin U772 USB Modem	ea	FREE
* All costs for handsets, air cards and data modems require activation or extension of service unless otherwise noted.							
NOTE A:	All new telephones, hand-held products, and PCMCIA cards come with a 12-month warranty.						

VENDOR NAME: Sprint Nextel

SERVICE NAME: Wireless Service and Equipment: Equipment

Activity (Add, Delete, Change)	Date of Vendor Request	Date Approved By DAS	Item	Item Code	Description of Service/Equipment (See Note A)	Unit	Price *
NOTE B:	Sprint Nextel will provide, at the user's option, one free digital telephone (Basic) with full network capabilities (dual mode, tri-mode) along with vehicle power and A/C adapter chargers per telephone number with conversion to the new contract, and a free trade-in or replacement every 12 months thereafter.						
NOTE C:	Extended until further notice - Increments of 10+5 are permitted after the initial 20+10 if submitted with the same TSR.						
NOTE D:	30 day promotional item from the date of DOIT approval						
NOTE: Grey highlighted items are no longer available. They have been either deleted or changed, and/or no longer apply							